

PRODUCT INFORMATION PACKET

Model No: 056B17D15554

Catalog No: G274A

2 HP General Purpose Motor, 1 phase, 1800 RPM, 115/230 V, 56C Frame, ODP
Single Phase ODP Motors



Regal and Marathon are trademarks of Regal Beloit Corporation or one of its affiliated companies.
©2020 Regal Beloit Corporation, All Rights Reserved. MC017097E

REGAL



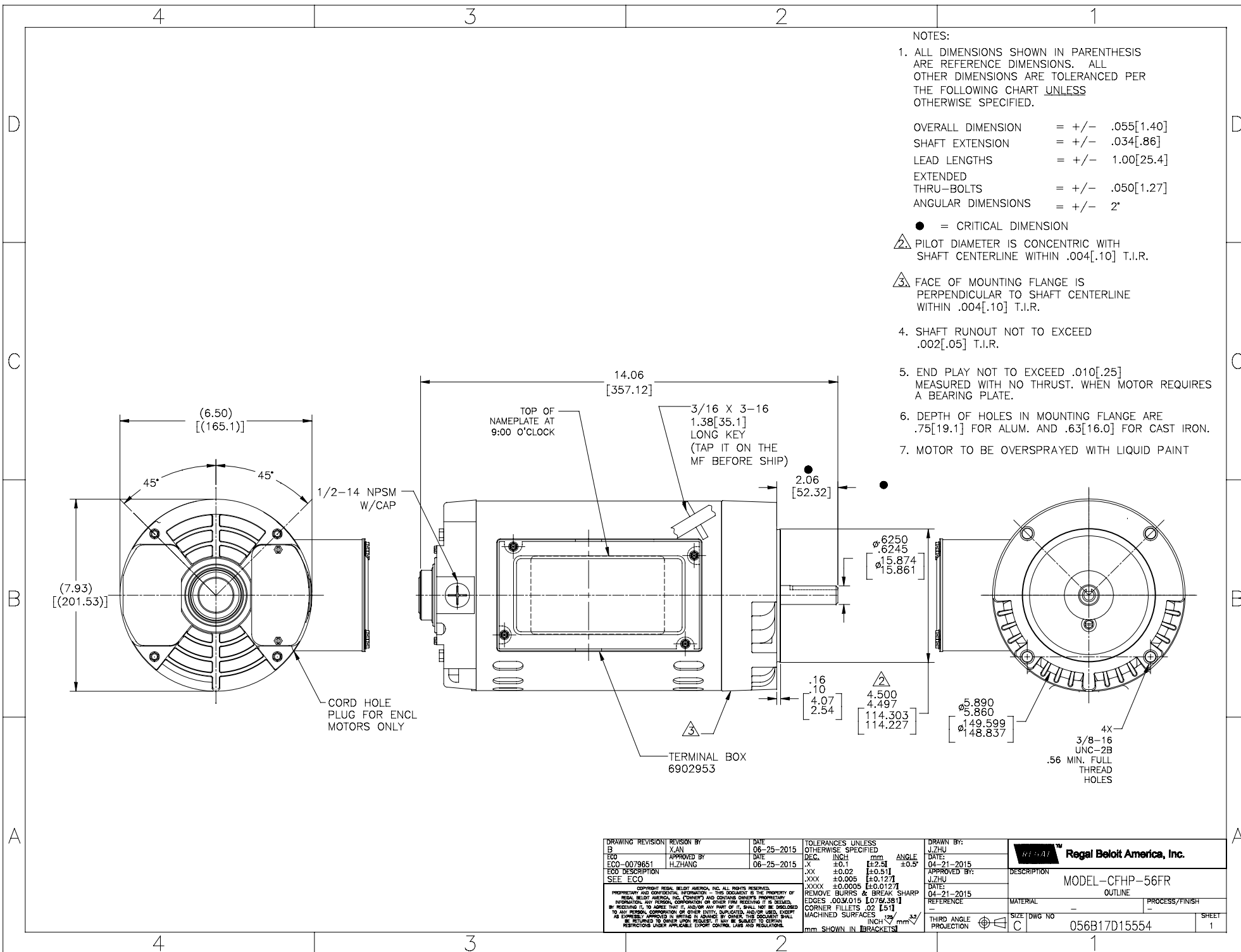
Nameplate Specifications

Output HP	2 Hp	Output KW	1.5 kW
Frequency	60 Hz	Voltage	115/230 V
Current	17.6/8.8 A	Speed	1725 rpm
Service Factor	1.15	Phase	1
Efficiency	84.5 %	Power Factor	90.2
Duty	Continuous	Insulation Class	B
Design Code	NO DESIGN CODE	KVA Code	J
Frame	56C	Enclosure	Drip Proof
Thermal Protection	No	Ambient Temperature	40 °C
Drive End Bearing Size	6203	Opp Drive End Bearing Size	6203
UL	Recognized	CSA	Y
CE	Y	IP Code	22

Technical Specifications

Electrical Type	Capacitor Start Capacitor Run	Starting Method	Across The Line
Poles	4	Rotation	Selective Counterclockwise
Resistance Main	.89 Ohms	Mounting	Round
Motor Orientation	Horizontal	Drive End Bearing	Ball
Opp Drive End Bearing	Ball	Frame Material	Rolled Steel
Shaft Type	T	Overall Length	14.06 in
Frame Length	8.25 in	Shaft Diameter	0.625 in
Shaft Extension	1.88 in	Assembly/Box Mounting	F1 OUT ODE BRKT RADIAL
Connection Drawing	D0000435-001	Outline Drawing	056B17D15554-S01

This is an uncontrolled document once printed or downloaded and is subject to change without notice. Date Created:14/12/2020



NOTES:

- ALL DIMENSIONS SHOWN IN PARENTHESIS ARE REFERENCE DIMENSIONS. ALL OTHER DIMENSIONS ARE TOLERANCED PER THE FOLLOWING CHART UNLESS OTHERWISE SPECIFIED.

OVERALL DIMENSION	= +/- .055[1.40]
SHAFT EXTENSION	= +/- .034[.86]
LEAD LENGTHS	= +/- 1.00[25.4]
EXTENDED THRU-BOLTS	= +/- .050[1.27]
ANGULAR DIMENSIONS	= +/- 2°

● = CRITICAL DIMENSION

- PILOT DIAMETER IS CONCENTRIC WITH SHAFT CENTERLINE WITHIN .004[.10] T.I.R.
- FACE OF MOUNTING FLANGE IS PERPENDICULAR TO SHAFT CENTERLINE WITHIN .004[.10] T.I.R.
- SHAFT RUNOUT NOT TO EXCEED .002[.05] T.I.R.
- END PLAY NOT TO EXCEED .010[.25] MEASURED WITH NO THRUST. WHEN MOTOR REQUIRES A BEARING PLATE.
- DEPTH OF HOLES IN MOUNTING FLANGE ARE .75[19.1] FOR ALUM. AND .63[16.0] FOR CAST IRON.
- MOTOR TO BE OVERSPRAYED WITH LIQUID PAINT

DRAWING REVISION BY B X.AN	DATE 06-25-2015	TOLERANCES UNLESS OTHERWISE SPECIFIED	DRAWN BY: J.ZHU	
ECO-0079651 APPROVED BY H.ZHANG	DATE 06-25-2015	DEC. INCH mm ANGLE X ±0.1 [±2.5] ±0.5° JXX ±0.02 [±0.51] JXXX ±0.005 [±0.127] JXXXX ±0.0005 [±0.0127]	DATE: 04-21-2015	
ECO DESCRIPTION SEE ECO		REMOVE BURRS & BREAK SHARP EDGES .003/015 [0.076/3.81] CORNER FILLETS .02 [.51] MACHINED SURFACES	APPROVED BY: J.ZHU	DESCRIPTION MODEL-CFHP-56FR OUTLINE
<small>COPYRIGHT REGAL BELOIT AMERICA, INC. ALL RIGHTS RESERVED. PROPRIETARY AND CONFIDENTIAL INFORMATION - THIS DOCUMENT IS THE PROPERTY OF REGAL BELOIT AMERICA, INC. (COMPANY) AND CONTAINS OWNERS PROPRIETARY INFORMATION. ANY REPRODUCTION OR OTHER FORM RECEIVED IS TO BE RETURNED TO ANY PERSON, CORPORATION OR OTHER ENTITY, SUPPLIER, AND/OR USER WITHOUT DELAY. BY RECEIVING IT, TO AGREE THAT IT, AND/OR ANY PART OF IT, SHALL NOT BE DISCLOSED TO ANY PERSON, CORPORATION OR OTHER ENTITY, SUPPLIER, AND/OR USER WITHOUT THE EXPRESS WRITTEN APPROVAL OF REGAL BELOIT AMERICA, INC. THIS DOCUMENT SHALL BE RETURNED TO OWNER UPON REQUEST. IT MAY BE SUBJECT TO CERTAIN RESTRICTIONS UNDER APPLICABLE EXPORT CONTROL LAWS AND REGULATIONS.</small>		REFERENCE: - THIRD ANGLE PROJECTION	MATERIAL: - PROCESS/FINISH: - SIZE DWG NO: 056B17D15554	SHEET: 1

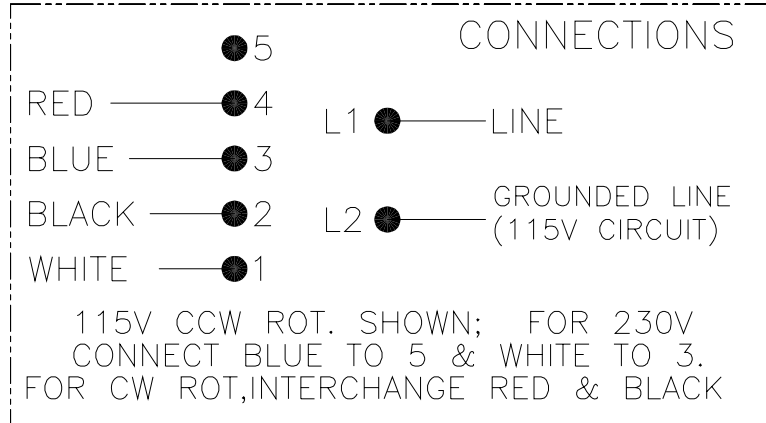
4

3

2

1

REVISION:	ECO	REVISADO POR:	FECHA:	APROBADO POR:	FECHA:
A	ECO-0028953	A.BAUGHMAN	11-09-2012	A.BAUGHMAN	11-09-2012



CARACTERISTICAS DE GEOMETRIA Y SIMBOLOS ▽ PLANICIDAD — RECTITUD ∠ ANGULARIDAD ⊥ PERPENDICULARIDAD (A ESQUADRA) // PARALELISMO ○ REDONDEZ (CIRCULARIDAD) ⌀ CILINDRICIDAD ⊖ PERFIL DE CUALQUIER SUPERFICIE ∩ PERFIL DE CUALQUIER LINEA ≠ VARIACION ⊕ POSICION REAL ⊙ CONCENTRICIDAD ≡ SIMETRIA	A MENOS QUE SE ESPECIFIQUE DE OTRA MANERA, LAS TOLERANCIAS DE LAS DIMS. SON LAS SIGUIENTES: PULG X XX XXX XXXX mm ±.1 ±.02 ±.005 ±.0005 mm ±0.5 ±0.13 ±0.013 ANG. ±50 GRADOS ELIMINAR REBABAS Y ORILLAS FILOSAS DEL BORDE. PULG .003-.015 mm 0.1-0.4 FILETEAR ESQUINA: PULG .020 mm 0.5 MAQUINAR SUPERFICIES PULG 125 mm 3.2 DIMS METRICAS MOSTRADAS [PARENTESIS]	DIBUJADO POR: A.BAUGHMAN 11-09-2012	REGAL-BELOIT CORPORATION
		APROBADO POR: A.BAUGHMAN 11-09-2012	
		TERCER ANGULO DE PROYECCION	FECHA EDS: 11-11-2011 REV. FORMATO: H
		CONFIDENCIAL: ESTE DIBUJO Y SU INFORMACION SON PROPIEDAD DE USO EXCLUSIVO Y CONFIDENCIAL DE REGAL-BELOIT CORPORATION. Y NO DEBERAN SER REVELADOS, DUPLICADOS, DISTRIBUIDOS O USARSE DE OTRA MANERA SIN EL CONSENTIMIENTO ESCRITO DE REGAL-BELOIT CORPORATION. -TODOS LOS DERECHOS RESERVADOS.	
		TAMAÑO: C	NUMERO DE DIBUJO: D0000435-001
		ESCALA: NONE	HOJA: 1

4

3

2

1

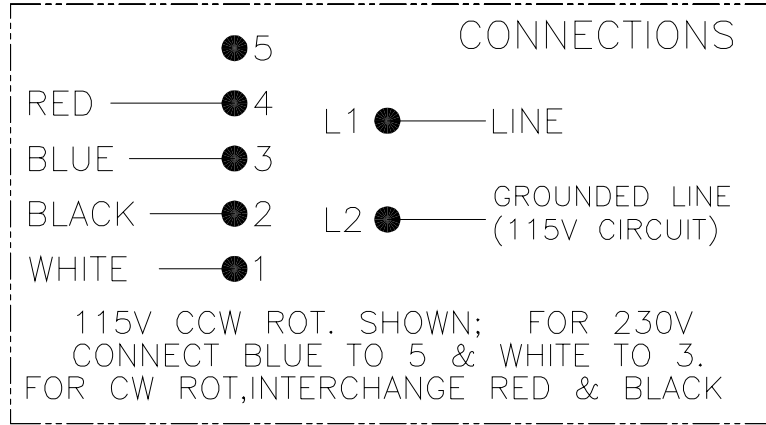
4

3

2

1

版本	ECO	编制	日期	批准	日期
A	ECO-0028953	A.BAUGHMAN	11-09-2012	A.BAUGHMAN	11-09-2012



形位公差 □ 平面度 ⊥ 垂直度 ∠ 倾斜度 ⊥ 垂直度 // 平行度 ○ 圆度 ⊙ 圆柱度 ⊙ 圆锥度 ⊙ 线轮廓度 ⊙ 圆跳动 ⊕ 位置度 ⊕ 同轴度 ⊕ 对称度	除另有注明 尺寸公差如下: 英寸 X XX XXX XXXX 毫米 ±.1 ±.02 ±.005 ±.0005 英寸 ±.1 ±.02 ±.005 ±.0005 毫米 ±0.5 ±0.13 ±0.013 角度 ±.50 度 清理毛刺和尖棱 英寸 .003-.015 毫米 0.1-0.4 内圆角 英寸 .020 毫米 0.5 表面粗糙度 英寸 125 毫米 3.2 米制尺寸显示在L
--	--

ASME Y14.5M 1994

绘图:	A.BAUGHMAN	11-09-2012
批准:	A.BAUGHMAN	11-09-2012
第三角投影		图版格式发布日期 11-11-2011 图版格式版本 H
机密: 本图纸及相关信息所有权归REGAL-BELOIT CORPORATION. 未经REGAL-BELOIT CORPORATION书面授权, 不得泄露、 复制、传播或作其他用途。--版权所有		

REGAL-BELOIT CORPORATION	
名称	CONN DIAGRAM-NAMEPLATE
图号	D0000435-001
比例	NONE
页号	1

4

3

2

1



MARATHON ELECTRIC CORPORATION
TYPICAL PERFORMANCE CURVE for AC MOTOR

Customer

Curve at

230 Volts
60 HZ
2 HP

HP 2.00

PHASE 1

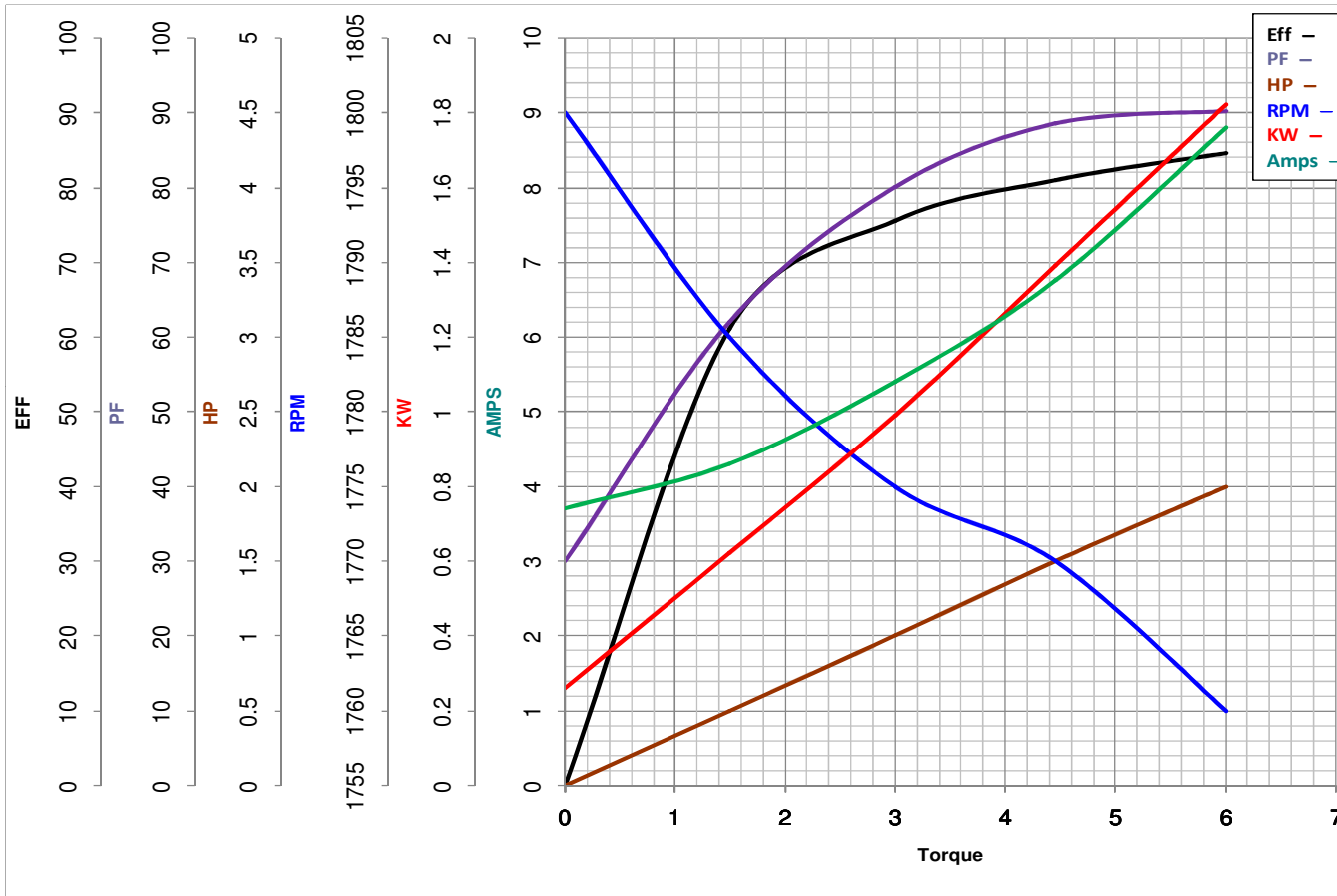
Model No 56B17D15554

VOLTS 115/230

Catalog No G274A

HZ 60

RPM 1725



Torque in Lb.Ft

FL TORQUE 6 Lb.Ft
BD TORQUE 17.9 Lb.Ft
LR TORQUE 17.63 Lb.Ft

FL AMPS 17.6/8.8
PU TORQUE 17.1 Lb.Ft
LR AMPS 65

WINDING SS0053212-3

Date 1/28/2019